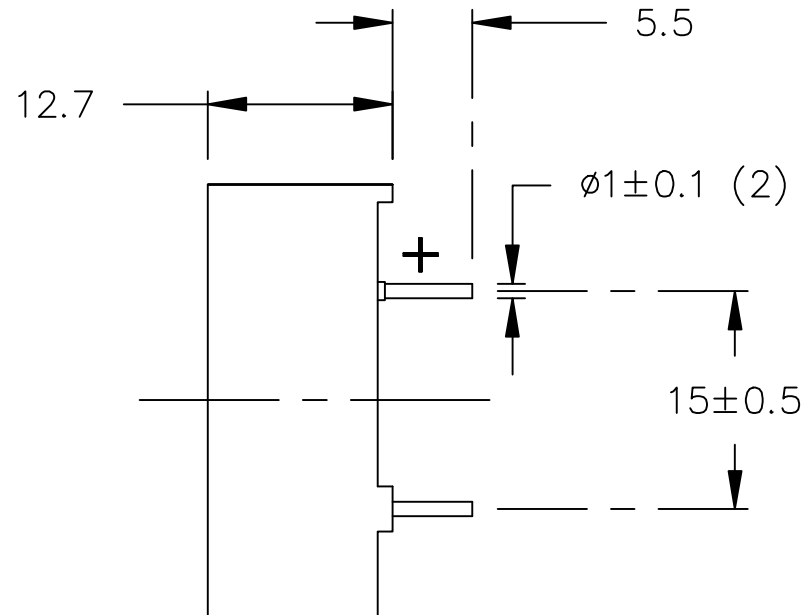
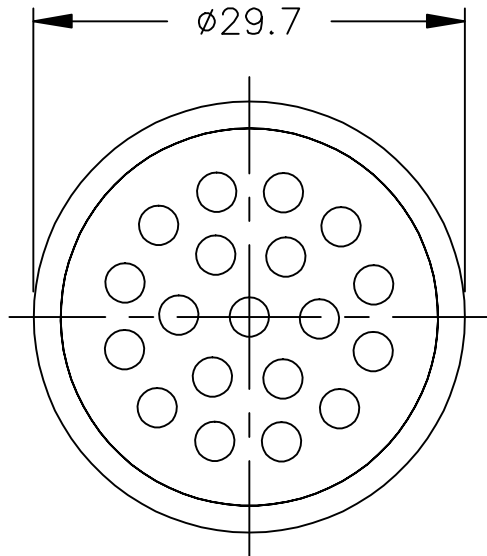


THIS DOCUMENT CONTAINS DATA PROPRIETARY TO PROJECTS UNLIMITED, INC. ANY USE OR REPRODUCTION, IN ANY FORM, WITHOUT PRIOR WRITTEN PERMISSION OF PROJECTS UNLIMITED, INC. IS PROHIBITED.
 ©2005, Projects Unlimited Inc.

SPECIFICATIONS

PARAMETERS	VALUES	UNITS
RATED INPUT POWER	0.15	W
MAX INPUT POWER	0.3	W
IMPEDANCE	100±20%	OHM
OUTPUT SPL @ 0.1W/10CM (AT 0.8, 1.0, 1.2, 1.5 kHz)	80±3	dB
DISTORTION (MAX.)	5%	-
RESONANT FREQUENCY	1200±10%	Hz
FREQUENCY RANGE	1200 ~ 10000	Hz
HOUSING MATERIAL	ABS	-
CONE MATERIAL	MYLAR	-
MAGNET MATERIAL	Nd-Fe-B	-
OPERATING TEMPERATURE	-20 ~ +60	°C
WEIGHT	8.5	grams



NOTES:

1. ALL DIMENSIONS ARE IN MILLIMETERS.
2. SPECIFICATION SUBJECT TO CHANGE OR WITHDRAWAL WITHOUT NOTICE.
3. THIS PART IS RoHS 2002/95/EC COMPLIANT.

REVISIONS			
LTR	DESCRIPTION	DATE	APPROVED
-	RELEASED FROM ENGINEERING	10/26/05	
A	ADDED RoHS STATEMENT	10/27/08	J.D.

UNLESS OTHERWISE SPECIFIED:
 DIMENSIONS ARE IN MILLIMETERS. TOLERANCES ARE ±0.5 AND ANGLES ARE ±3°.



projects®
 unlimited

Dayton, Ohio

SPEAKER

APPROVALS	DATE
DRAWN <i>J.A.F.</i>	10/05
CHECKED <i>E.P.</i>	10/05
APPROVED <i>B.R.</i>	10/05

SIZE
 A

DRAWING NO.
 AST-030COMR-R

FILE NAME
 AST-030COMR-R.DWG

DO NOT SCALE DRAWING

SCALE: N.T.S.

SHEET 1 OF 1